

*Inspiring Better Office*



## FREE DELIVERY PROMOTION

WITH A SINGLE PURCHASE OF S\$1000

- \$30 will be charged for delivery with purchase below \$1000
- Not valid for steel cabinets

Free Space planning & Consultation • Free assembly of Furniture

Address: 164 Kallang Way, Kolam Ayer Ind. Est., #04-15, S 349248

# SALE UP TO 50% OFF!!



**CH-027B**  
Low-Back,  
Mesh Fabric,  
Sandwich  
Seat pan.

In Stock Colours:  
Black



**CH-026B**  
Mid-Back,  
Mesh Fabric,  
Sandwich  
Seat pan.

In Stock Colours:  
Black



**CH-030B**  
Mid-Back,  
Mesh Fabric,  
Sandwich  
Seat pan.

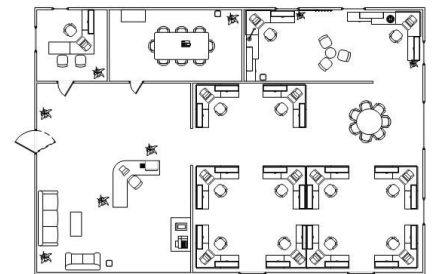
In Stock Colours:  
Black



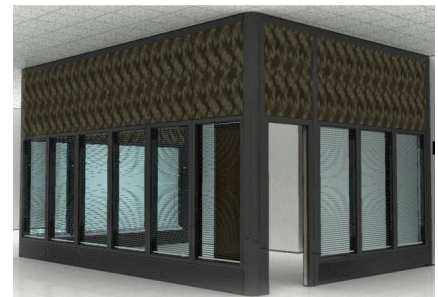
**CH-023B**  
Mid-Back,  
Mesh Fabric,  
Sandwich  
Seat pan.

In Stock Colours:  
Red/ Green/ Blue  
c/w Black Seat

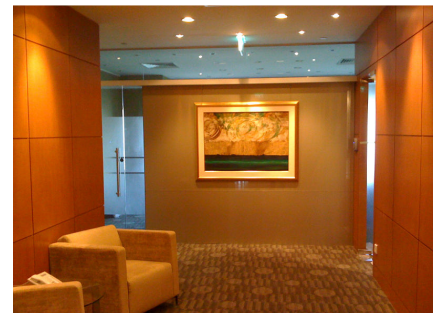
We provide the following services:



• Space Planning & Consultation



• High Partition Wall Series



• Lightings / Carpets / Wall paper

## VINYL LEATHER EXECUTIVE CHAIR SERIES

ALL PRICES STATED IN THIS CATALOGUE ARE SUBJECTED TO 7% G.S.T



**CH-21B**  
Medium-Back Executive Chair,  
Vinyl Leather, Aluminium Base.



**CH-021A**  
High-Back Executive Chair  
Vinyl Leather, Aluminium Base.



**CH-013A**  
High-Back Executive Chair  
Vinyl Leather, Nylon Base.



**CH-091B1**  
Medium-Back Executive Chair,  
Adjustable Armrest, Vinyl Leather,  
Aluminium Base.



**CH-091A1**  
High-Back Executive Chair,  
Adjustable Armrest, Vinyl Leather,  
Aluminium Base.



**CH-010A**  
High-Back Director Chair, Vinyl  
Leather, Aluminium Base.

1 YEAR LIMITED WARRANTY FOR ALL LEATHER, MESH FABRIC & FABRIC CHAIRS' SPARE PARTS ONLY. SPARE PARTS ARE AVAILABLE FOR A 1-FOR-1 EXCHANGE ONLY AT OUR OFFICE.

## MESH EXECUTIVE CHAIR SERIES

ALL PRICES STATED IN THIS CATALOGUE ARE SUBJECTED TO 7% G.S.T



**CH-026A**

High-Back, Lumbar Support, Breathable Net Material, Nylon Base



**CH-0110B**

Medium-Back, Lumbar Support, Locking Mechanism, Body-weight adjustment Seat Pan, Nylon Base



**CH-070B**

Medium-Back, Lumbar Support, Multi Locking Mechanism, Adjustable Armrest, Nylon Base



**CH-074A**

High-Back, Lumbar Support, Multi Locking Mechanism, Adjustable Headrest & Armrest, Aluminium Base.



**CH-096A**

High-Back, Lumbar Support, Multi Locking Mechanism, Adjustable Seat, Headrest & Armrest, Aluminium Base.



**CH-090A**

High-Back, Lumbar Support, Multi Locking Mechanism, Adjustable Seat, Headrest & Armrest. Aluminium Base.

Pictures for illustration only. All merchandise advertised is while stock last. Prices are accurate at printing time.

1 YEAR LIMITED WARRANTY FOR ALL LEATHER, MESH FABRIC & FABRIC CHAIRS' SPARE PARTS ONLY. SPARE PARTS ARE AVAILABLE FOR A 1-FOR-1 EXCHANGE ONLY AT OUR OFFICE.

## SYSTEM FURNITURE

ALL PRICES STATED IN THIS CATALOGUE ARE SUBJECTED TO 7% G.S.T

### PARIS SERIES

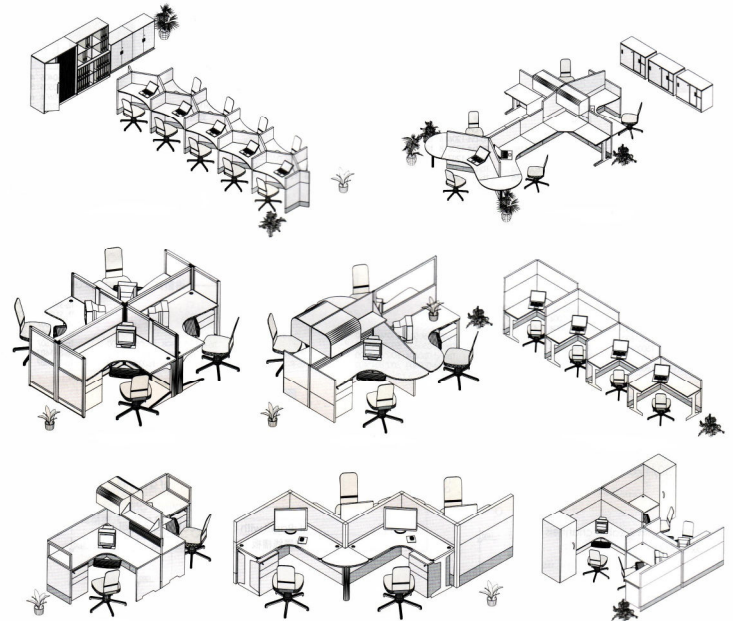


Paris Series Close Up profile

### MILAN SERIES



### DIAMOND SERIES



\*\* ALL ACCESSORIES NOT INCLUDED

## STEEL CABINETS

ALL PRICES STATED IN THIS CATALOGUE ARE SUBJECTED TO 7% G.S.T



### RM-201

**Half Height Glass Sliding Door Cupboard**

Size: 914H x 914L x 457mmD

\* Comes with one adjustable shelf



### RM-202

**Half height Steel Sliding Door Cupboard**

Size: 914H x 914L x 457mmD

\* Comes with 1 adjustable shelf



### RM-203

**Half Height Steel Swing Door Cupboard**

Size: 914H x 914L x 457mmD

\* Comes with 1 adjustable shelf



### RM-204

**Full Height Steel Swing Door Cupboard**

Size: 1828H x 914L x 457mmD

\* Comes with 3 adjustable shelves



### RM-205

**Full Height Steel Sliding Door Cupboard**

Size: 1828H x 914L x 457mmD

\* Comes with 3 adjustable shelves



### RM-206

**Full Height Glass Sliding Door Cupboard**

Size: 1828H x 914L x 457mmD

\* Comes with 3 adjustable shelves

#### Remarks:

1. Colour for cupboards: Light / Dark Grey
2. Delivery: \$30 minimum base price for 3 items and below.
3. Town area - Add another \$10
4. Price quoted is exclusive of supplying labour to carry up using staircase.

Pictures for illustration only. All merchandise advertised is while stock last. Prices are accurate at printing time.

## OFFICE SOFA & STUDENT CHAIR

ALL PRICES STATED IN THIS CATALOGUE ARE SUBJECTED TO 7% G.S.T



**S25**



**S07**



**S04**



**S10**

**CH-099C**



**CH-048C**



**RSWL02**

Pictures for illustration only. All merchandise advertised is while stock last. Prices are accurate at printing time.

www.raymax.com.sg • sales@raymax.com.sg • sales hotline: 6842 5227 / 6741 8834 • Fax: 6741 9484